

MONTHLY MEMBERSHIP PROGRESS REPORT

District 9 SE

Results as of: 6/30/2025

GMT:

LOCATION IOWA

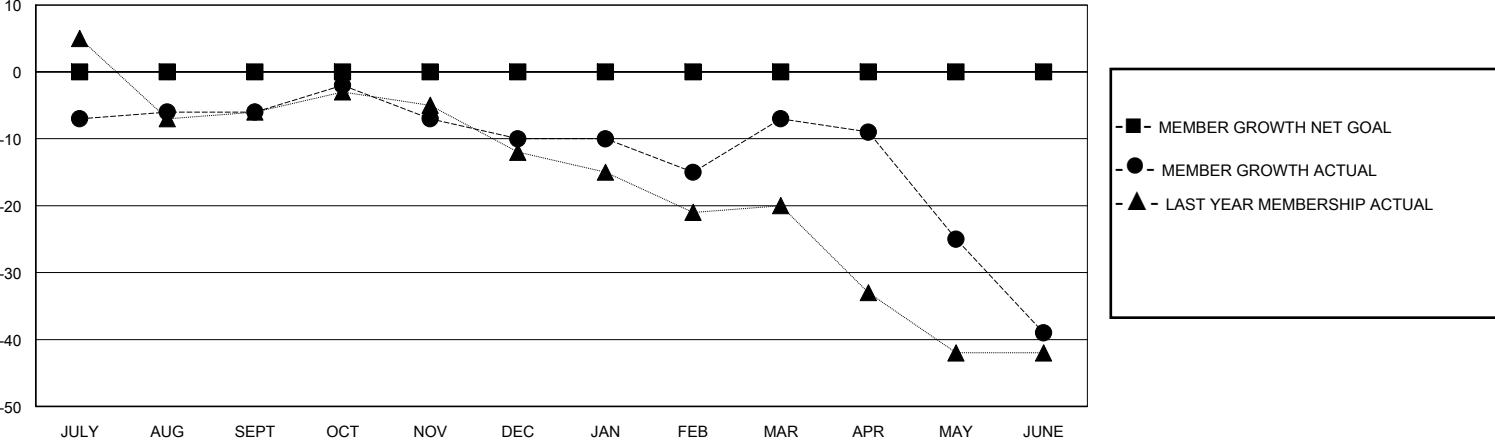
GMT CA

Clubs				Members			
RESULTS FOR 2024-2025				RESULTS FOR 2024-2025			
QUARTER	NEW CLUB GOAL	NEW CLUBS	DROPPED CLUBS	QUARTER	MEMBER GROWTH NET GOAL	MEMBER GROWTH ACTUAL	DROPPED MEMBERS ACTUAL (including transfers)
JULY/AUG/SEPT	0	0	0	JULY/AUG/SEPT	0	9	13
OCT/NOV/DEC	0	0	0	OCT/NOV/DEC	0	6	10
JAN/FEB/MAR	0	0	0	JAN/FEB/MAR	0	19	15
APR/MAY/JUNE	0	0	0	APR/MAY/JUNE	0	22	47

GOALS AND ACTUAL NEW CLUBS CUMULATIVE



GOALS AND ACTUAL MEMBERS CUMULATIVE



DROPPED CLUBS: 0	17 CLUBS OF 38 ADDED 1 OR MORE NEW MEMBERS	<u>GENDER DISTRIBUTION</u> MALE 495 (66.89%) FEMALE 245 (33.11%)
<u>DROPPED MEMBERS</u> DECEASED 14 CLUB CANCELLED 0 OTHER 71 TOTAL 85	<a href="#">CLICK HERE FOR CUMULATIVE MEMBERSHIP DATA</a>	TOTAL FAMILY UNIT MEMBERS 152 FAMILY MEMBERS PAYING HALF DUES 76